

The High Street then and now

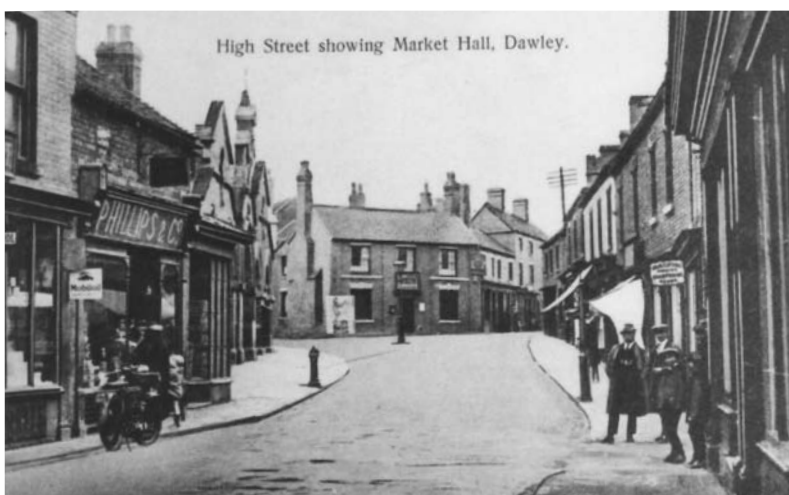
You can tell a great deal about how life has changed by looking at the shops and businesses in an area and how these have changed over time.

Using old photographs, census reports, maps and accounts from people who lived in the area in the past you can map out the change of use of the shops in the local high street.

Use the template to show present day shops and try to discover if, how and when they have changed.

Questions to consider

1. What type of shops are there now?
2. Which of these were there 100yrs ago, 40 years ago
3. Were there more or fewer shops in the past?
4. Was there more choice of shops in the past?
5. How did most people shop in the past?
6. How do most people shop now?
7. How many people might have worked in the high street shops?
Is this more or less than today?



The High Street then and now

Street Plan for today
